



HARBOR: Gamma-Scout Checklist

Version: 1 July 2011

Flight date: _____

Flight #: _____

Square pulse button- 

Computer button- 

Up button- 

Becquerel button- 

Down button- 

Windows button- 

Clock button- 

Enter- 

Yellow Button- 

When in doubt, press **enter**, then the **yellow button**, and start over.

Inventory

- Gamma-Scout sensor
- Protective cardboard sleeve
- Small Screw driver or knife
- Laptop with Gamma-Scout Software
- USB hook-up

One day prior to flight

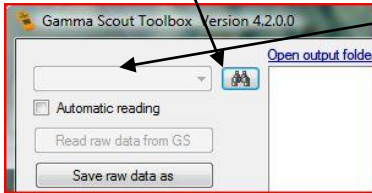
- Check that the Gamma-Scout is on the lowest logging mode
 - ∇ Press the **windows button**
 - ∇ Press the **up** and **down arrow keys** until the screen shows “Pr. 7d”



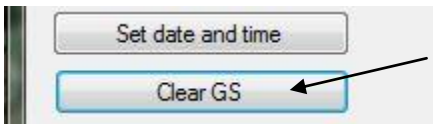
- Take off the little panel on the bottom/side of the Gamma-Scout
 - ∇ Insert a small knife or screw driver into the indentation, press inward, and the panel will pop out a bit.
 - ∇ Pull the panel off
- Plug USB hookup into the Gamma-Scout and then into computer
- Open Gamma-Scout Toolbox on the computer
- Press the **computer button**—don't be alarmed by the beeping. “PC on” will be displayed.



- Press the binocular button, and select a comport



- Press the “Clear GS” button



- A window will pop up to prompt you asking, “Shall the Gamma-Scout be cleared?” Select yes.
- A window will then pop up stating “Gamma-Scout Protocol initialized” This indicates memory has been cleared
- Record TIME CLEARED: _____
- If a check is needed to make sure that the memory was cleared, go to the “Retrieve Data” section of this Checklist

Flight day

Start data logging:

- Manually set time to flight GPS time
 - ▽ Press **clock button**—display will then show a matching clock



- ▽ Press **enter**—this allows you to set the hour using the **up** or **down arrow button**
- ▽ Press **enter** again to set minutes using **up** or **down arrow buttons**
- ▽ Press **enter** once again to set the seconds and **enter** when finished
- ▽ Press **clock button** again to check that the date is correct—display shows a calendar in corner. (Note: date is in DD.MM.YY format)



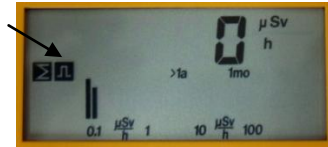
- ◇ Press **enter** to adjust day
- ◇ **Enter** again for month
- ◇ **Enter** again for year and **enter** to finish

∇ Exit by pressing the **yellow button**

- Check that the device is in the correct mode—Data logging. A number should be displayed in the middle of the screen and $\mu\text{Sv/h}$ on the right side. (The sigma is not necessary)



∇ If an icon resembling a **square pulse** is showing, press the corresponding **square pulse button** so the icon flashes, and then press the **yellow button**



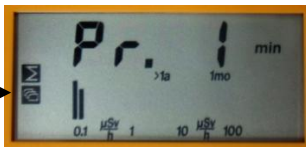
∇ If a pound sign is flashing with the right hand part of the screen displaying 1/s, press the **yellow button**, it will return you to data logging mode.

- Move the gray lever switch all the way to the right, to $\alpha+\beta+\gamma$



- Press the **windows button** to switch to log mode. The windows symbol will be displayed on the screen

- Press **up button** until display shows “Pr. 1 min”



- Press **enter**
- Verify unit is logging
 - ∇ Bar(s) on display
 - ∇ Number is in $\mu\text{Sv/hr}$

Mounting procedures:

- Put on cardboard sleeve to protect keypad.
- Mount in HARBOR flight box

Flight day data recovery

Stop data logging:

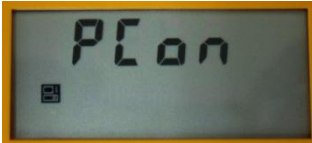
- Flip lever to γ , or pointing straight forward. This protects the α -detector with a physical barrier.
- Press the **window button** once.
- Press **down button** until display shows “Pr. 7 d”



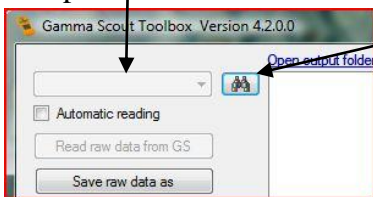
- Press **enter**.

Retrieve data:

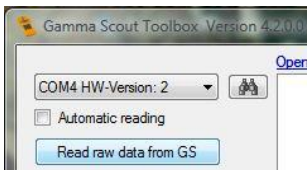
- Plug Gamma-Scout into computer
- Open Gamma-Scout Toolbox
- Press the **computer button**—don't be alarmed by the beeping. “PC on” will be displayed.



- If the Gamma-Scout has not been connected before, press the binocular button, and select a com port

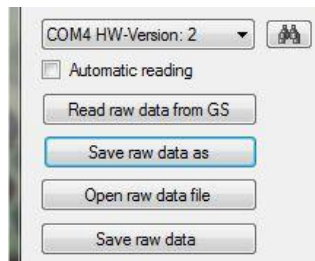


- Press “Read raw data from GS”



- Save files as two types

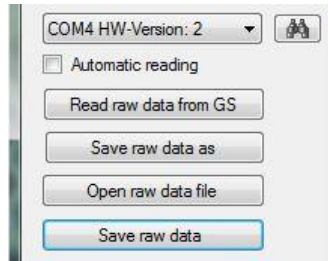
 ▽ Push “Save raw data as”



 ◇ Saves as a .txt file

 ◇ Name as “gscout_har_yymmdd (date of data)_level0

 ▽ Push “Save raw data”



◇ Saves as a .dmp file

◇ Name as gscout_har_yymmdd (date of data)_level0

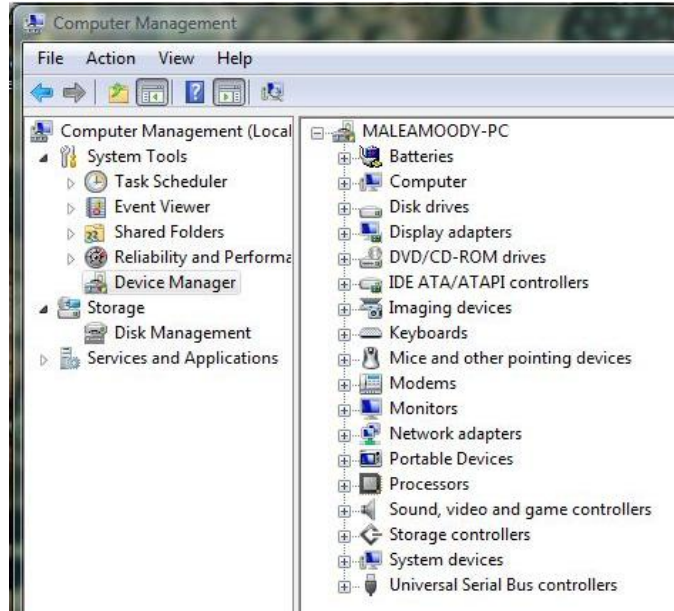
- To look for formatted output, you'll have to open the .txt file.
 - ▽ First, there are 28 lines of text that is put on every file
 - ▽ First column-contains event number
 - ▽ Second-the range of the sample
 - ▽ Third-beginning date and time of sample
 - ▽ Fourth-end date and time of sample
 - ▽ Fifth-Counts during that range
 - ▽ Sixth-PRate-corresponding pulse rate for the range (pulses per second)
 - ▽ Seventh-DRate-corresponding dose rate for the range (microsieverts per hour)
 - ▽ Eighth-CFac- the internal Calibration factor
 - ▽ Ninth-tells if the logging interval was interrupted

Basic information:

1. If an alarm goes off, press the **yellow button** twice.
2. The alarm goes off when the alert level is reached.
 - a. To change the alert level:
 - i. Press the **windows button** twice, firmly, and not quickly. This displays the current level which triggers the alert.
 - ii. Use the **up** or **down buttons** to change the threshold.
 - iii. Press **enter** to save the changes.
 - iv. As of 5-26-11, the Alert level was set at 40 $\mu\text{Sv/h}$
3. To get a straight count over a certain period of time
 - a. Press the **square pulse button**. The symbol will be displayed
 - i. Press **enter** to set the seconds
 - ii. Press **enter** to set the minutes
 - iii. Press **enter** to set the hours
 - b. using **up** and **down buttons** set specific time
 - c. start measuring by pushing the **square pulse button**
 - d. stop measuring by pushing the **square pulse button**
 - e. exit by pushing the **yellow button**

Installation Information

- If not found, Install driver using disk
 - ▽ Right click on computer or my computer—select manage
 - ▽ Select device manager



- ▽ Check the USB driver for the Gamma-Scout is installed

- ◇ Right click on the Gamma-Scout USB



- ◇ Select properties

- ◇ Select driver tab



- ◇ Click Update Driver

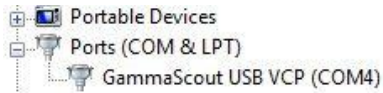
- ◇ Select Browse Computer option, and select the Gamma-Scout installation CD

Browse for driver software on your computer



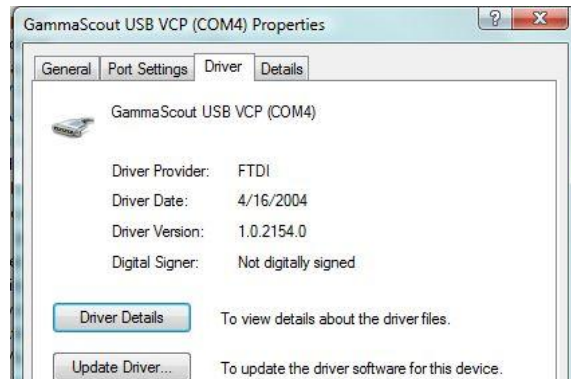
▽ Check that the driver for the Gamma-Scout port is installed

◇ Right click on the Gamma-Scout Port (COM_)



◇ Select properties

◇ Select driver tab



◇ Click Update Driver

◇ Select Browse Computer option, and select the Gamma-Scout installation CD

Browse for driver software on your computer

Search for driver software in this location:

